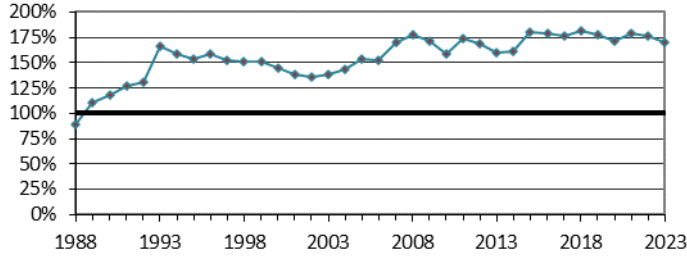
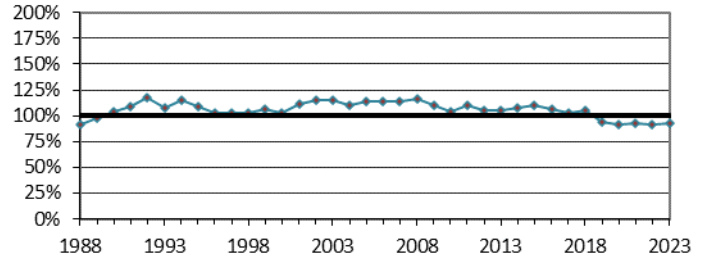


Regional Service Charge Index as a Percent of the National Average (1988-2023)

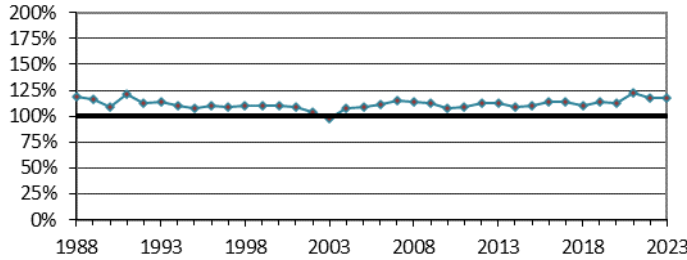
EPA Region 1



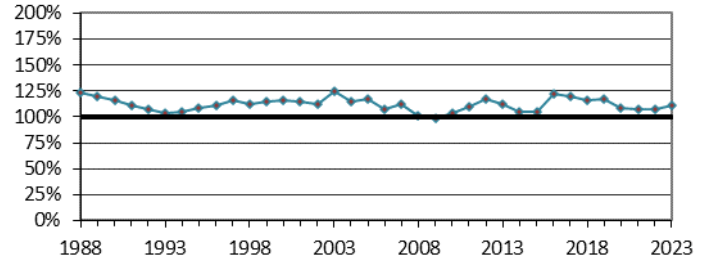
EPA Region 2



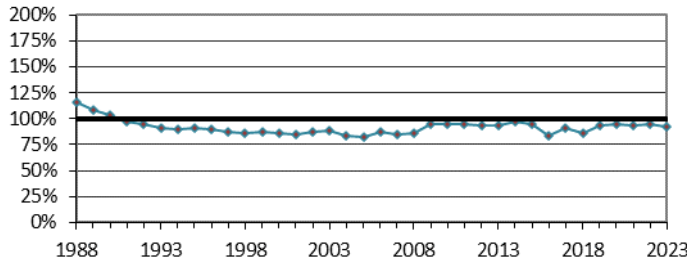
EPA Region 3



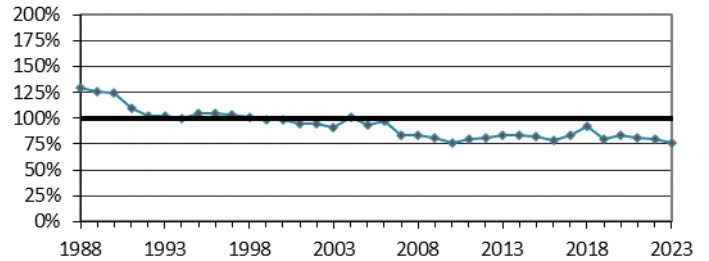
EPA Region 4



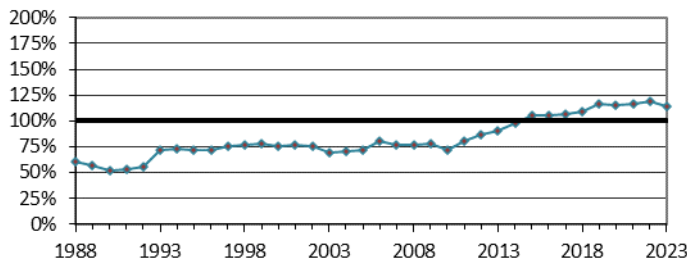
EPA Region 5



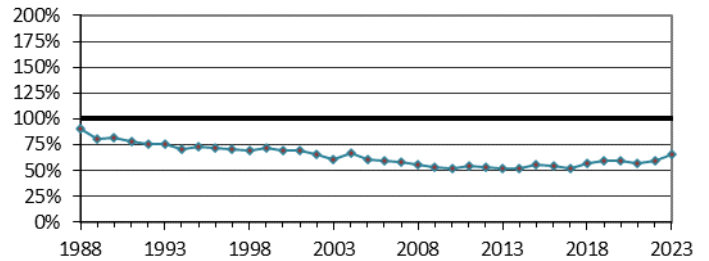
EPA Region 6



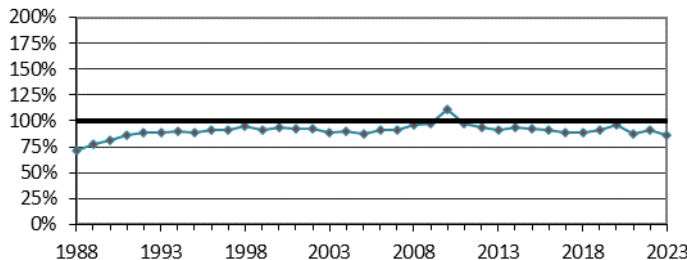
EPA Region 7



EPA Region 8



EPA Region 9



EPA Region 10

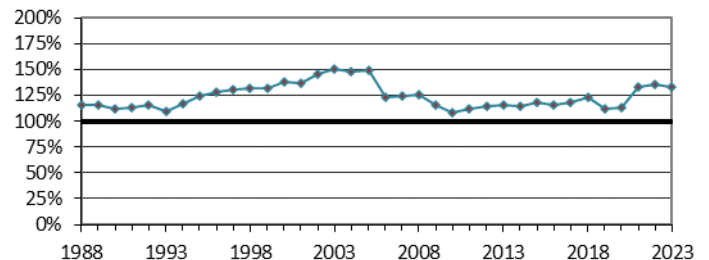
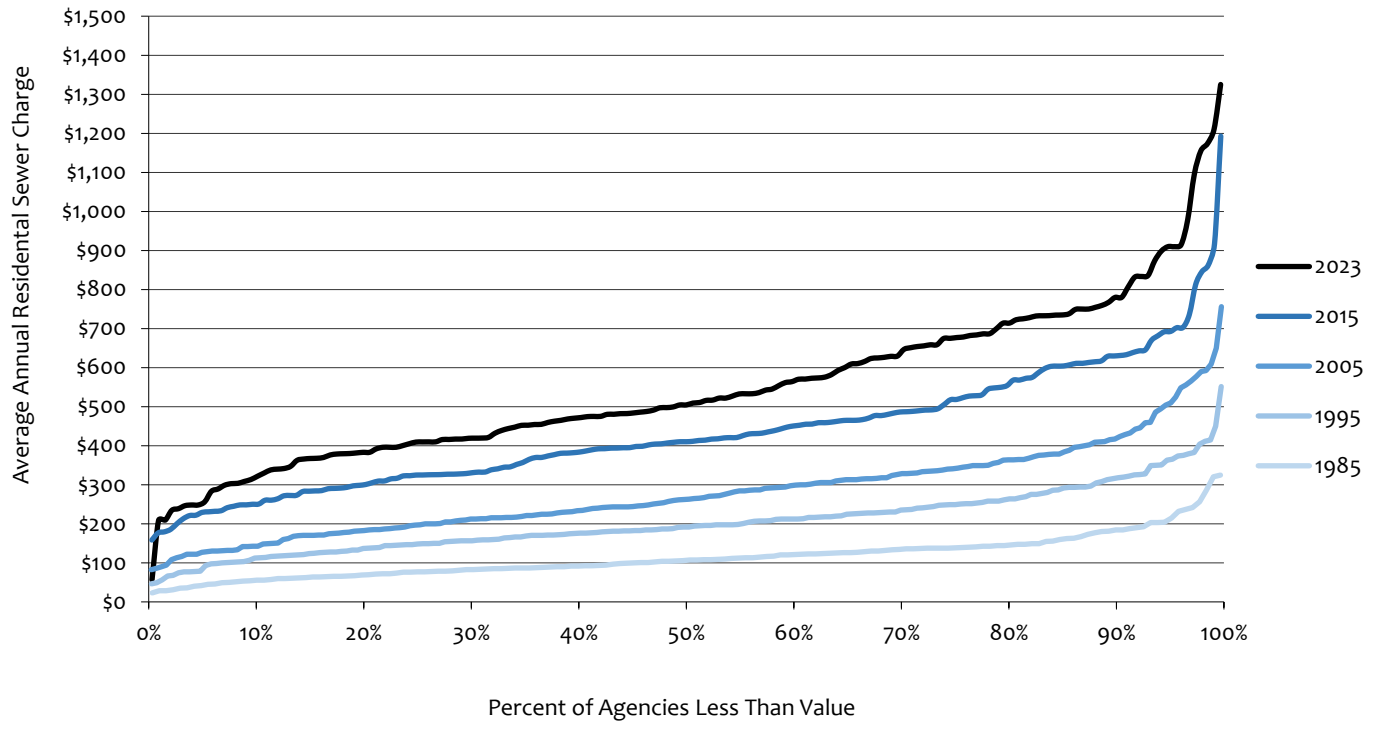


Table R-3 Average Annual Sewer Service Charge by EPA Region (1985-2023)

Year	Region 1	Region 2	Region 3	Region 4	Region 5	Region 6	Region 7	Region 8	Region 9	Region 10	National
1985	\$71.74	\$87.74	\$124.46	\$142.85	\$141.32	\$108.90	\$65.12	\$104.57	\$64.87	\$118.54	\$102.75
1986	\$82.23	\$92.07	\$140.97	\$147.95	\$145.19	\$124.77	\$70.12	\$104.70	\$69.87	\$128.23	\$109.69
1987	\$100.65	\$103.02	\$142.94	\$156.86	\$140.29	\$146.30	\$72.68	\$104.95	\$75.39	\$132.98	\$115.51
1988	\$109.09	\$113.10	\$146.69	\$152.13	\$143.33	\$159.47	\$74.20	\$111.79	\$87.50	\$142.84	\$123.17
1989	\$146.94	\$130.73	\$155.64	\$159.89	\$144.18	\$168.07	\$76.20	\$108.46	\$103.14	\$154.60	\$133.65
1990	\$171.31	\$151.08	\$158.54	\$167.91	\$149.25	\$180.86	\$75.60	\$118.51	\$117.91	\$162.91	\$144.84
1991	\$199.77	\$171.40	\$190.65	\$175.78	\$154.06	\$173.30	\$84.55	\$123.73	\$135.38	\$178.43	\$157.88
1992	\$224.52	\$200.66	\$192.20	\$183.28	\$162.39	\$175.65	\$95.38	\$129.22	\$151.63	\$198.31	\$171.33
1993	\$312.62	\$202.08	\$214.43	\$194.79	\$171.21	\$192.52	\$135.78	\$141.67	\$166.91	\$206.26	\$188.12
1994	\$314.46	\$228.65	\$219.33	\$209.38	\$178.02	\$196.97	\$145.44	\$139.99	\$177.98	\$231.06	\$198.68
1995	\$311.61	\$221.16	\$219.13	\$221.46	\$183.78	\$212.54	\$146.26	\$149.95	\$180.75	\$252.36	\$203.22
1996	\$329.39	\$212.09	\$228.72	\$230.37	\$185.35	\$217.93	\$148.84	\$147.90	\$188.26	\$265.79	\$207.28
1997	\$318.71	\$213.84	\$229.04	\$241.79	\$181.65	\$216.85	\$157.71	\$147.52	\$192.36	\$272.46	\$209.49
1998	\$323.37	\$220.48	\$234.95	\$240.56	\$182.65	\$214.37	\$164.92	\$149.30	\$202.00	\$280.25	\$213.52
1999	\$324.77	\$228.57	\$236.39	\$247.73	\$187.89	\$212.70	\$167.56	\$154.73	\$196.78	\$285.14	\$215.61
2000	\$321.19	\$228.20	\$243.75	\$258.41	\$191.88	\$218.11	\$168.41	\$155.33	\$207.56	\$305.72	\$222.31
2001	\$318.72	\$255.85	\$250.23	\$264.27	\$195.22	\$218.68	\$174.99	\$159.72	\$212.39	\$314.30	\$229.63
2002	\$325.60	\$276.08	\$249.55	\$268.74	\$207.32	\$225.66	\$180.12	\$158.41	\$220.99	\$348.21	\$238.95
2003	\$346.87	\$286.70	\$244.16	\$311.31	\$220.11	\$228.64	\$171.49	\$152.46	\$220.01	\$375.13	\$249.44
2004	\$374.54	\$288.61	\$282.95	\$300.02	\$218.75	\$264.95	\$184.68	\$175.91	\$235.86	\$387.05	\$261.48
2005	\$434.72	\$321.74	\$307.43	\$332.32	\$234.03	\$266.10	\$205.16	\$172.02	\$248.99	\$424.45	\$283.91
2006	\$450.31	\$337.77	\$328.61	\$317.28	\$257.38	\$286.47	\$237.39	\$174.16	\$267.69	\$362.64	\$294.98
2007	\$521.61	\$351.17	\$352.44	\$346.23	\$261.41	\$258.73	\$235.62	\$179.91	\$279.37	\$381.80	\$307.60
2008	\$574.21	\$375.19	\$367.16	\$326.15	\$277.94	\$272.61	\$247.33	\$180.30	\$312.89	\$407.39	\$324.11
2009	\$609.85	\$391.05	\$400.52	\$351.74	\$338.53	\$291.17	\$279.35	\$190.15	\$347.99	\$414.82	\$356.90
2010	\$603.38	\$397.14	\$409.75	\$397.34	\$363.08	\$289.33	\$275.64	\$199.36	\$423.15	\$414.22	\$381.45
2011	\$694.75	\$437.43	\$433.97	\$436.66	\$379.11	\$315.88	\$321.44	\$218.77	\$387.45	\$447.01	\$398.54
2012	\$698.93	\$435.98	\$462.55	\$482.27	\$386.52	\$334.36	\$357.31	\$219.23	\$387.48	\$471.93	\$412.17
2013	\$699.85	\$460.26	\$493.67	\$490.74	\$407.50	\$366.93	\$395.11	\$225.02	\$400.58	\$502.29	\$435.26
2014	\$722.31	\$481.80	\$487.14	\$467.33	\$437.33	\$371.67	\$439.35	\$232.31	\$419.37	\$511.42	\$447.99
2015	\$812.79	\$496.06	\$496.90	\$472.65	\$428.34	\$371.67	\$476.01	\$251.62	\$415.45	\$533.32	\$451.93
2016	\$860.09	\$510.38	\$547.29	\$584.29	\$400.82	\$376.82	\$501.97	\$259.28	\$435.60	\$553.62	\$479.07
2017	\$884.44	\$512.25	\$571.14	\$535.72	\$455.45	\$418.89	\$531.30	\$261.82	\$444.23	\$594.02	\$501.21
2018	\$915.86	\$529.22	\$553.50	\$581.85	\$433.48	\$461.38	\$547.66	\$289.49	\$445.18	\$619.53	\$503.01
2019	\$910.06	\$481.10	\$581.64	\$598.64	\$477.49	\$409.05	\$596.24	\$306.19	\$468.63	\$571.56	\$512.01
2020	\$902.64	\$484.82	\$595.95	\$569.08	\$497.67	\$440.94	\$605.43	\$309.94	\$505.51	\$593.89	\$526.44
2021	\$985.96	\$513.97	\$674.82	\$589.33	\$517.52	\$446.31	\$638.61	\$315.78	\$482.11	\$731.58	\$550.81
2022	\$1,000.36	\$517.34	\$663.95	\$606.66	\$534.52	\$451.47	\$673.91	\$334.45	\$516.74	\$771.08	\$567.12
2023	\$1,010.27	\$550.08	\$699.36	\$653.43	\$547.00	\$454.38	\$679.57	\$387.48	\$513.09	\$790.06	\$587.59
# of Responses	9	10	18	23	31	10	13	14	22	14	164
Population (millions)	3.5	13.1	11.1	10.0	19.7	9.3	4.3	3.9	19.3	4.8	99.0

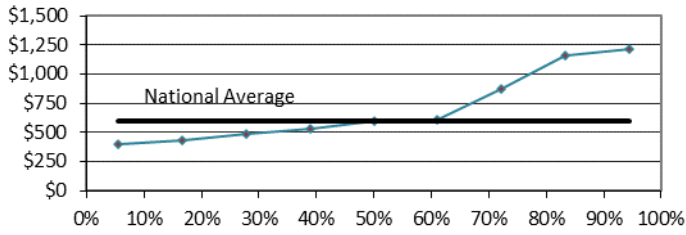
Distribution Trend of Average Annual Residential Sewer Charge (National)



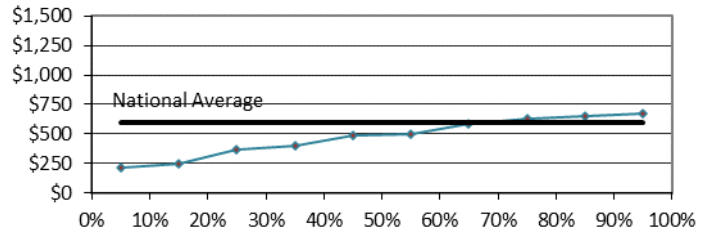
Regional Distribution of Service Charges (2023)

(Charge vs. Percent of Charges Less Than Value)

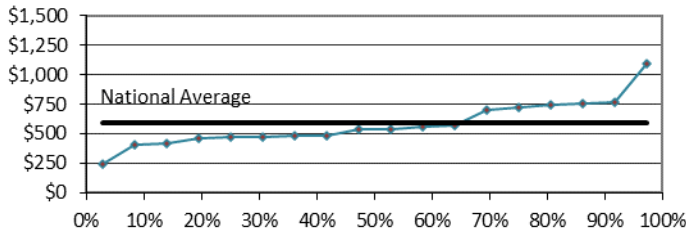
EPA Region 1



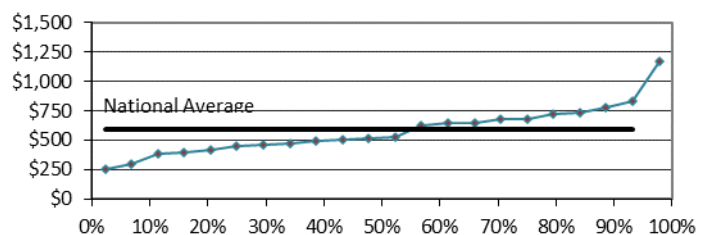
EPA Region 2



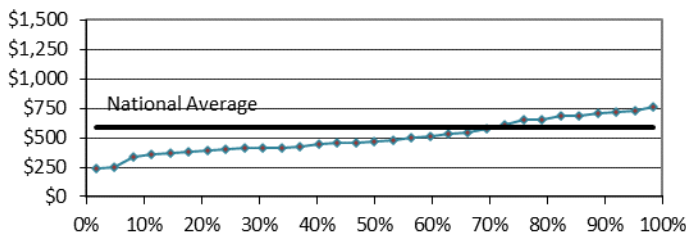
EPA Region 3



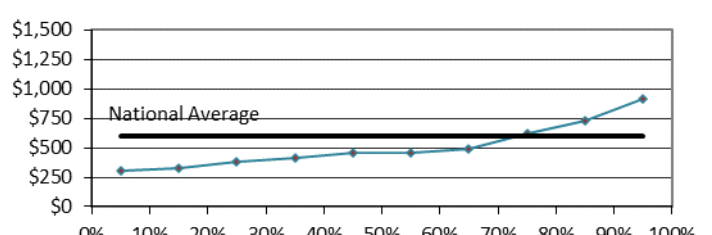
EPA Region 4



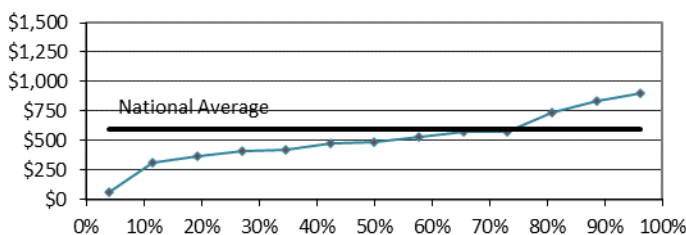
EPA Region 5



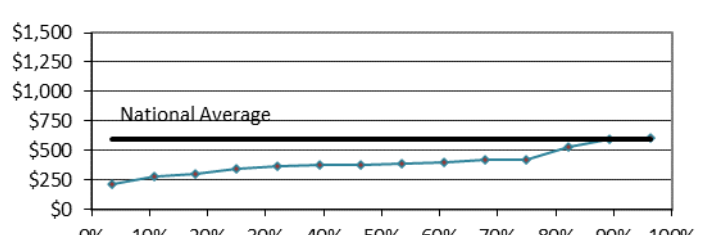
EPA Region 6



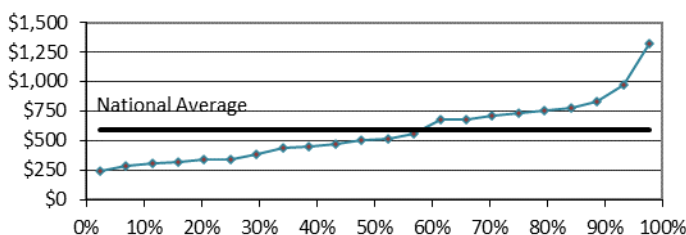
EPA Region 7



EPA Region 8



EPA Region 9



EPA Region 10

